

Meal Tracker®

Menu Planning



Includes:

- **Nutritional Analysis**
- **Production**
- **Recipe Costing**

Meal Tracker® Menu Planning software was created with school food service in mind. You don't have time for a complicated, hard-to-learn software. You also don't have an unlimited budget for technology.

We can help.

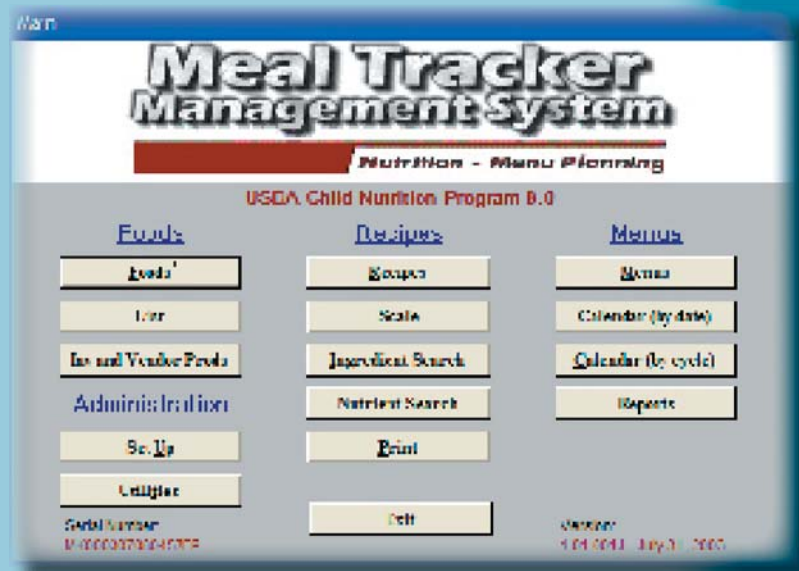
We've combined the best of all worlds: an easy to learn software that's very economical, yet robust and versatile.

Menus - Plan by Calendar or Cycle

Use the on-screen calendar for easy menu creation. Menus may be quickly copied to new site locations and dates.

Recipes

Create your own recipes, or use/edit the included USDA CN8 database recipes. Print the recipes complete with directions, nutrition information, and cost per serving data. Recipes may also be printed by production area (hot foods, cold foods, etc.)



Nutritional Analysis

Includes USDA Child Nutrition 8 (CN8) Database.

On-Screen Analysis of Menus, Including Flag of Low Values

Nutrient Search

Easily find a food or recipe that meets very specific nutrient criteria.

Ingredient Search & Replace

Reports for Any Recipe or Menu

Production

Hazard Analysis (HACCP)

The sanitary food handling dictionary is included for use in recipe directions -- just cut and paste into recipes. These critical control messages become part of the printed recipe.

Daily Production Report & Production Forecast Report

They're included so that you can plan resources.

Inventory Link

Production needs may be used to deduct stock from inventory levels on hand, if using the Meal Tracker® Inventory software module.

Recipe Costing

Recipe Costing & Menu Costing Available Instantly

As recipes and menus are created, you will immediately see the total cost, as well as the cost per serving.

Cost Analysis Report

Analyze menus for any location, for any time period, for total costs.

The screenshot shows a software window titled "Menu Cost Analysis". It contains several input fields and dropdown menus. The "Begin Date" field is set to "04/05/2005" and the "End Date" field is set to "04/08/2005". The "Meal" dropdown menu is set to "Lunch" and the "Site" dropdown menu is set to "Beaumont Elementary". At the bottom of the window, there are two buttons: "Preview" and "Cancel".

**To request an onsite or web demo, call toll-free 888-880-8278
ext. 138 or 127.**

ACCU-SCAN

E-mail: sales@accu-scan.com
Web: www.accu-scan.com

Technology you need. Help you deserve.